

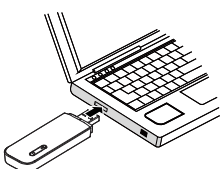
Thank you for choosing the Mobile WiFi Smart. The Mobile WiFi Smart allows you to access a wireless network at high speed.

Note:

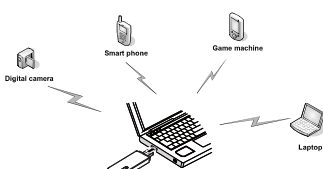
- This guide briefly describes the appearance of the Mobile WiFi Smart and the procedures for using the Mobile WiFi Smart. For details about how to set the management parameters, see help information on the web management page.

Connection Scenarios

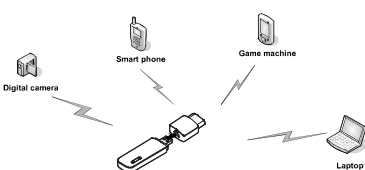
Scenario 1: One-device Internet access using computer



Scenario 2: Multi-device Internet access using Wi-Fi (connected to a computer)

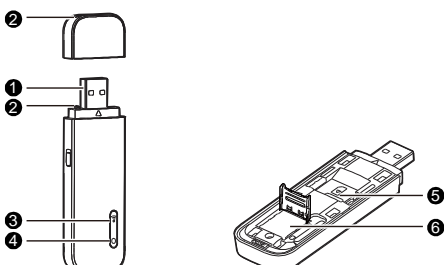


Scenario 3: Multi-device Internet access using Wi-Fi (connected to the power adapter)



Getting to Know Your Mobile WiFi Smart

The following figure shows the Mobile WiFi Smart. It is provided only for your reference. The actual product may be different.

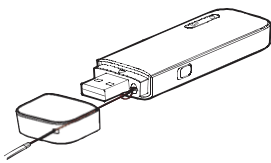


1 USB connector

It connects the Mobile WiFi Smart to a computer.

2 Strap holes

You can tie the Mobile WiFi Smart and its cap together by threading a strap through the strap holes.



3 WiFi indicator

It indicates the status of a WiFi network.

- Blinking green once every 3 seconds: The Mobile WiFi Smart is powered on, and the WiFi function is available.
- Steady green: A WiFi connection is set up.
- Off: The WiFi function failed or the Mobile WiFi Smart is powered off.

4 2G/3G indicator

It indicates the Mobile WiFi Smart's status.

- Blinking green twice every 3 seconds: The Mobile WiFi Smart is powered on, but is not registered with a network.
- Blinking green once every 0.2 second: The Mobile WiFi Smart's software is being upgraded.
- Blinking green once every 3 seconds: The Mobile WiFi Smart is registering with a 2G network.
- Blinking blue once every 3 seconds: The Mobile WiFi Smart is registering with a 3G or 3G+ network.
- Steady green: The Mobile WiFi Smart is connected to a 2G network.
- Steady blue: The Mobile WiFi Smart is connected to a 3G network.
- Steady cyan: The Mobile WiFi Smart is connected to a 3G+ network.
- Off: The Mobile WiFi Smart is powered off.

5 SIM/USIM card slot

It holds a Subscriber Identity Module (SIM) or Universal Subscriber Identity Module (USIM) card.

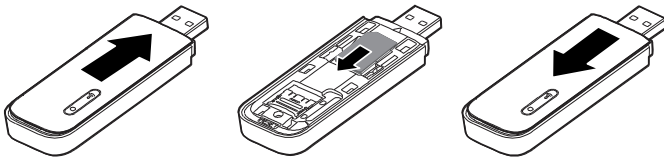
6 microSD card slot

It holds a microSD card.

Getting Started

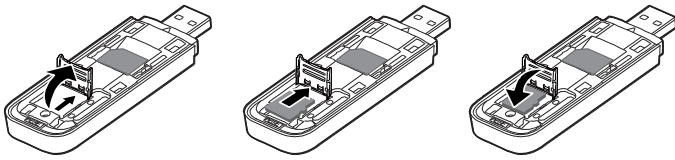
Installing the SIM/USIM Card

1. Slide the front cover off.
2. Insert the SIM/USIM card into the card slot.
3. Slide the front cover back onto the Mobile WiFi Smart until it snaps into place.



Installing the microSD Card

1. Slide the front cover off.
2. Slide the microSD card holder door towards its hinges to unlock it. Then open the door.
3. Place the microSD card into the holder. Ensure that the gold contact area faces down and that the gold contacts of the microSD card align with those of the holder.
4. Close the microSD card holder door and slide it away from its hinges to lock it.



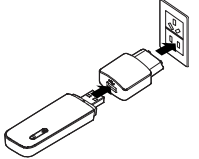
5. Slide the front cover back onto the Mobile WiFi Smart until it snaps into place.

Note:

- The microSD card is an optional accessory. If it is not included in the product package, purchase one separately.
- When installing the SIM/USIM card, ensure that the beveled edge of the SIM/USIM card aligns with that of the SIM/USIM card slot.
- When installing a microSD card, ensure that the microSD card notch aligns with that of the microSD card holder.
- Do not remove the microSD or SIM/USIM card when the card is in use. Otherwise, the card and your Mobile WiFi Smart may be damaged and the data stored on the card may be corrupted.

Using the Power Adapter

Connect the Mobile WiFi Smart to the power adapter's USB port, and connect the power adapter to a power outlet.



Note:

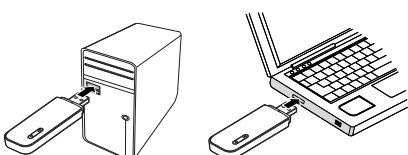
- Only use power adapters compatible with the Mobile WiFi Smart and provided by a designated manufacturer. Use of an incompatible power adapter or one from an unknown manufacturer may cause the Mobile WiFi Smart to malfunction, fail, or could even cause a fire. Such use voids all warranties, whether expressed or implied, on the product.
- The power adapter is an optional accessory. If it is not included in the product package, purchase one separately.

Using Your Mobile WiFi Smart

The procedure for installing the management program depends on your computer's operating system. The following sections are based on Windows XP.

Connecting to a 2G/3G Network

1. Connect the Mobile WiFi Smart to one of your computer's USB ports.



The installation wizard runs automatically.

2. Complete the installation as prompted. When the installation is complete, the Mobile WiFi Smart's web management page icon is displayed on your computer's desktop.
3. A dial-up connection is set up and you are connected to the network in automatic mode.

Note:

- If the installation wizard does not run automatically, find the **AutoRun.exe** file in the driver path, and double-click the file to run it.
- To set up a dial-up connection in manual mode, double-click the web management page icon to log in to the page, and click **Connect**. The default user name and password are **admin**.
- If your SIM/USIM card's personal identification number (PIN) verification function is enabled, double-click the web management page icon, log in to the page, and enter and save the PIN.
- If you are not using the default access point name (APN), double-click the web management page icon, log in to the page, and configure and save the APN settings on the dial-up settings tab.
- When using the Mobile WiFi Smart to access a 2G/3G network, do not use other devices to access the network, because doing so may cause conflicts.

Disconnecting from a 2G/3G Network

- Manually disconnect the Mobile WiFi Smart from the network on the web management page.
- Remove the Mobile WiFi Smart from your computer.

Note:

- If no data is transferred within 10 minutes and if no WiFi connection is set up, the Mobile WiFi Smart automatically disconnects from the network.
- If you do not need to connect to the network, it is recommended that you remove the Mobile WiFi Smart from your computer to reduce data traffic.

Setting Up a WiFi Connection

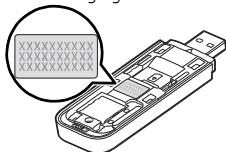
1. Ensure that the Mobile WiFi Smart's WiFi function is available.
2. To set up a computer with the Mobile WiFi Smart, choose **Start > Control Panel > Network Connections > Wireless Network Connection**.

Note: To set up a Wi-Fi connection, your computer must have a wireless network adapter installed. If **Wireless Network Connection** is displayed, a wireless network adapter is available. Otherwise, check to make sure you have a wireless network adapter installed.

3. Click **View available wireless networks** to view the wireless network connection list.
4. Select the wireless network connection whose service set identification (SSID) is the same as that of the Mobile WiFi Smart, and click **Connect**.

Note:

- If a security mechanism is enabled for the wireless network connection, enter the correct network key.
- The SSID and the network key are printed on the Mobile WiFi Smart, as shown in the following figure.



5. Wait until a wireless network connection icon is displayed in the lower right corner of the computer screen. A wireless network connection is set up.

Accessing the Internet

A maximum of five WiFi devices can connect to the Mobile WiFi Smart to access the Internet. After a connection between your Mobile WiFi Smart and WiFi device is set up, you can access the Internet using the modes listed in the following table.

Select an appropriate mode according to your data service charging plan. For example, if you are charged according to the length of time you are connected to the Internet, it is recommended that you select manual mode. For details about your data service charging plan, contact your service provider.

Mode	Description
Automatic	If the PIN and APN settings are correct and if there is data being transferred after the device is powered on, the Mobile WiFi Smart automatically connects to the Internet.
Manual	Log in to the web management page, and connect to and disconnect from the Internet as prompted.

Note:

- You can log in to the web management page to select the Internet access mode.
- When you are roaming, the Mobile WiFi Smart automatically disconnects from the Internet, and you can connect to and disconnect from the Internet only manually.

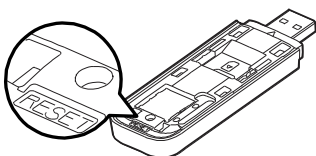
Viewing Service Information

Visit <http://192.168.1.1> to view your service information.

Restoring Factory Defaults

If you are uncertain of which settings you have configured or changed, you can restore the factory defaults that come with the Mobile WiFi Smart, and reconfigure the device.

To restore the factory defaults, connect the Mobile WiFi Smart to a computer or a power outlet, and press and hold the RESET button for 5 seconds.

**Note:**

Restoring factory defaults deletes all the device's user-defined settings and restores all the settings on the web management page to their defaults.