
Packard Bell

EasyNote MH Series

Disassembly Guide



Table of Contents

Overview	3
Technician Notes.....	3
Disassembly Instructions.....	3
Reassembly Instructions	3
Required Tools	3
Battery	4
Optical Drive.....	4
Memory Modules	5
Keyboard	7
Bottom Cover	8
Hard Disk.....	9
Wireless LAN.....	10
RTC Battery.....	13
Mainboard	13
Modem and RJ-11 Port (optional).....	16
Speakers	16
Touchpad	17
LCD Assembly.....	17
LCD Panel	19
Webcam	22
Inverter Board.....	22
Wireless LAN Antenna	22
Reassembly Notes	24
Notice	24

Overview

This document contains step-by-step disassembly instructions for the EasyNote MH series. The instructions are illustrated where necessary with images of the part of the device that is being removed or disassembled.

Packard Bell B.V. reserves the right to make changes to the EasyNote MH series without notice.

Technician Notes

Only technicians authorized by NEC Computers International BV should attempt to repair this equipment. All troubleshooting and repair procedures are detailed to allow only subassembly/module level repair. Because of the complexity of the individual boards and subassemblies, no one should attempt to make repairs at the component level or to make modifications to any printed wiring board. Improper repairs can create a safety hazard. Any indication of component replacement or printed wiring board modifications may void any warranty or exchange allowances.

Disassembly Instructions

When disassembling the unit, follow these general rules:

- Turn off the power and disconnect all cables.
- Label all removed connectors. Note where the connector goes and in what position it was installed.
- Do not disassemble the unit into parts that are smaller than those specified in the instructions.

Reassembly Instructions

Reassembly is the reverse of the disassembly process. Use care to ensure that all cables and screws are returned to their proper positions. Check that no tools or any loose parts have been left inside the product. Check that everything is properly installed and tightened.

Required Tools

All disassembly procedures can be performed using the following tools:

- Phillips (#1 bit) screwdriver
- Hex bolt (5 bit) screwdriver
- Small flat blade screwdriver

Battery

1. Push aside the 2 latches securing the battery.

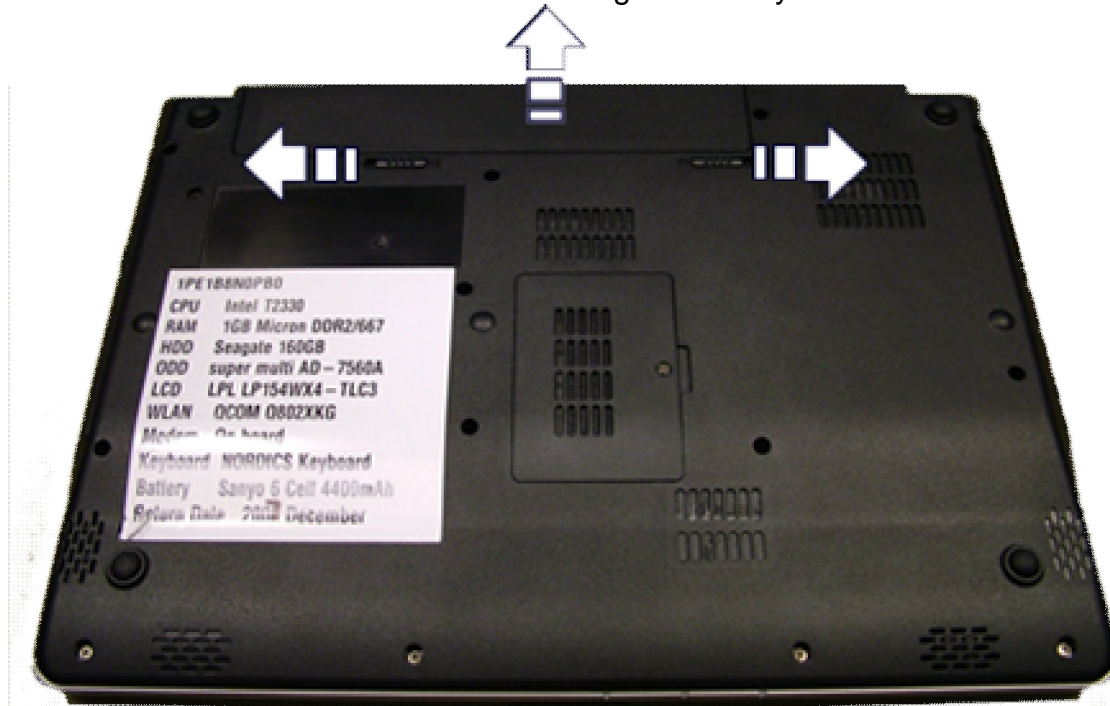


Fig. 1 Removing the battery.

2. Pull out the battery

Optical Drive

1. Remove the battery and keyboard as described above.
2. Remove the 2 screws.



Fig. 2 The optical drive cover.

3. Pull the drive out.

4. Remove the screws of the 2 drive brackets (one on the rear, one on the side).

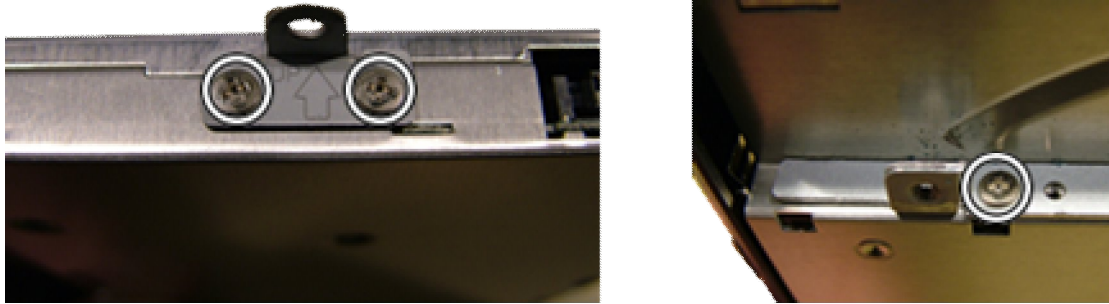


Fig. 3 *The optical drive bracket.*

5. Remove the brackets from the optical drive.
6. Open the drive tray and unlock the 2 latches of the drive bezel.

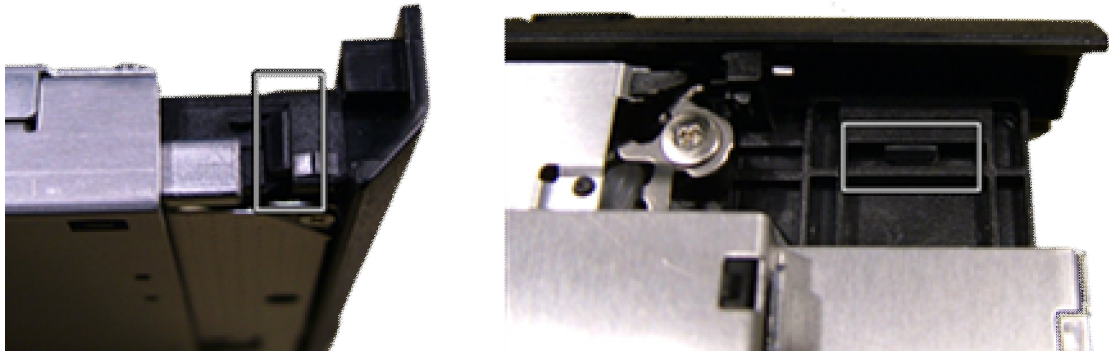


Fig. 4 *The optical drive bezel.*

6. Take away the front bezel.

Memory Modules

1. Remove the battery as described above.
2. Remove the memory cover. The screw stays attached to the cover.



Fig. 5 *The memory modules cover.*

3. Push the clips aside to unlock the memory module.
4. Remove the memory cover. The screw stays attached to the cover.

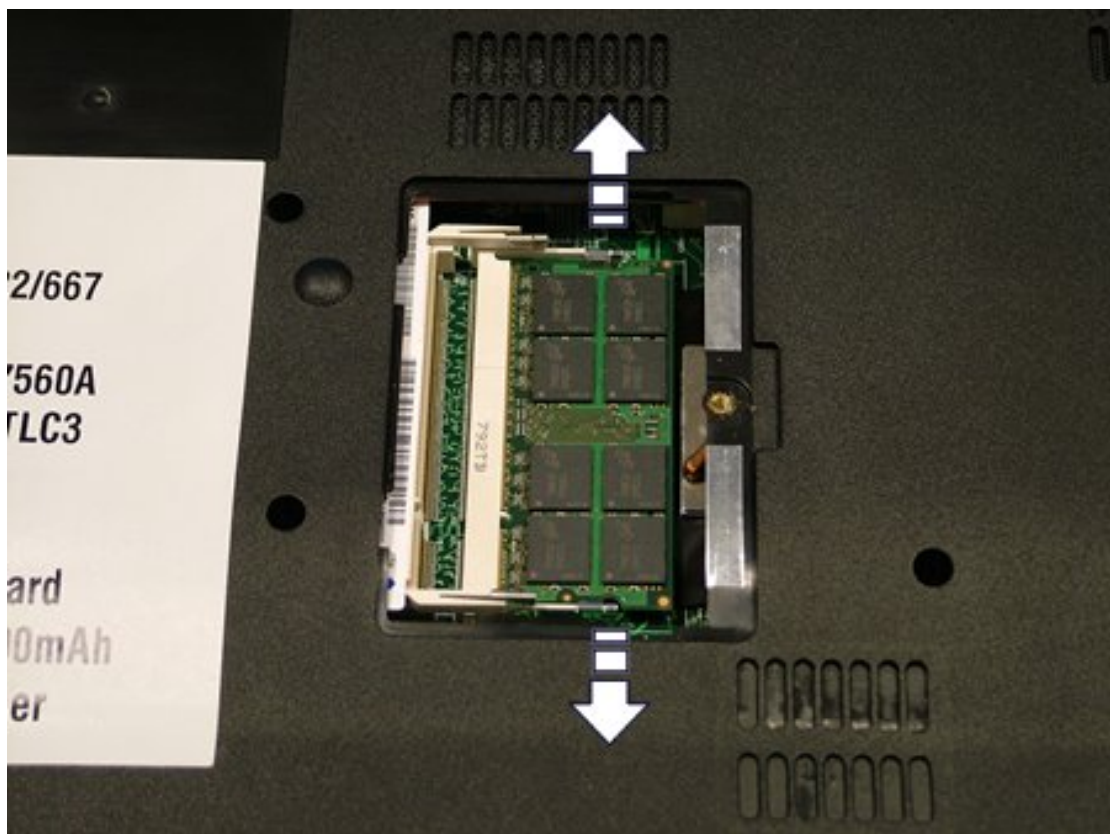


Fig. 6 *The memory modules*

5. Remove the memory module. Always remove the top one first.

Keyboard

1. Remove the battery as described above.
2. Push back the 4 clips that secure the keyboard with a flathead screwdriver.



Fig. 7 *The keyboard clips.*

3. Lift up the keyboard.
4. Disconnect the flatcable by carefully lifting the black clamp.

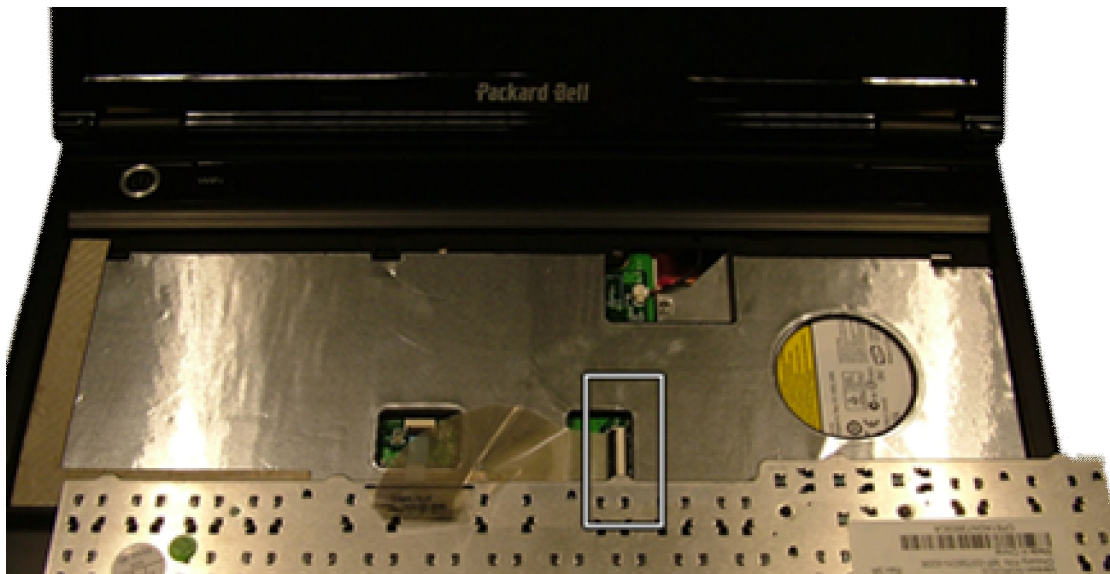


Fig. 8 *The keyboard flatcable.*

5. Lift out the keyboard.

Bottom Cover

1. Remove the battery, optical drive and keyboard as described above.
2. Disconnect the power cable from the mainboard.

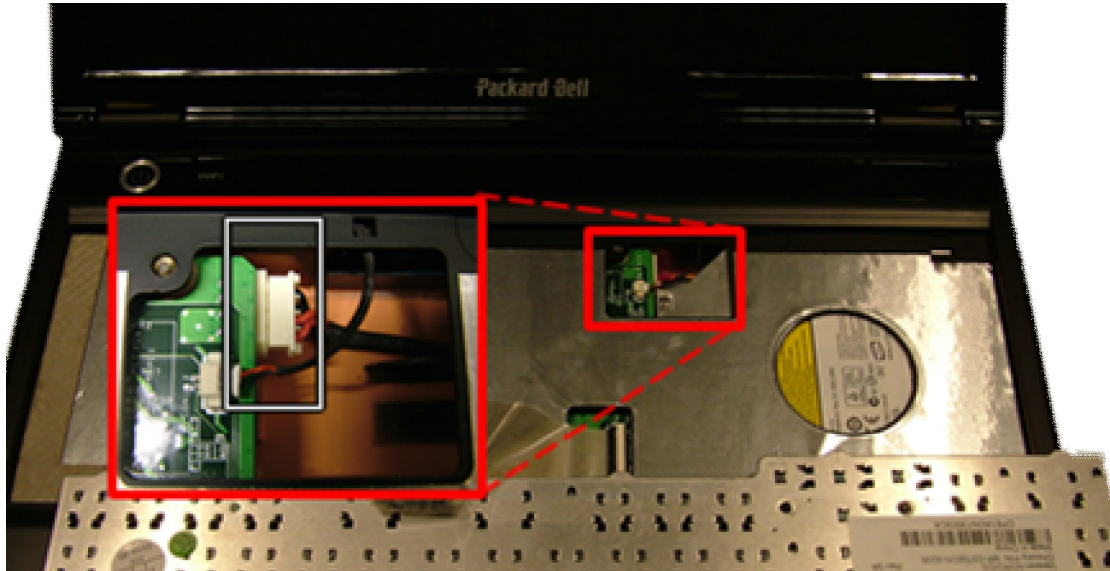


Fig. 9 *The mainboard power cable.*

3. Remove the 2 screws on the rear side of the notebook.

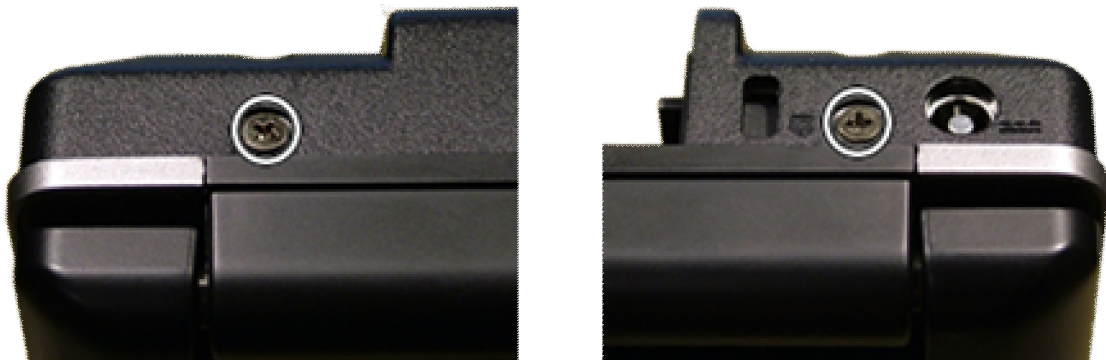


Fig. 10 *The rear screws of the bottom cover.*

4. Remove the 15 screws from the bottom base.



Fig. 11 The bottom of the notebook.

5. Take away the bottom cover.

Hard Disk

1. Remove the bottom cover as described above.
2. Pull the hard disk to the left.

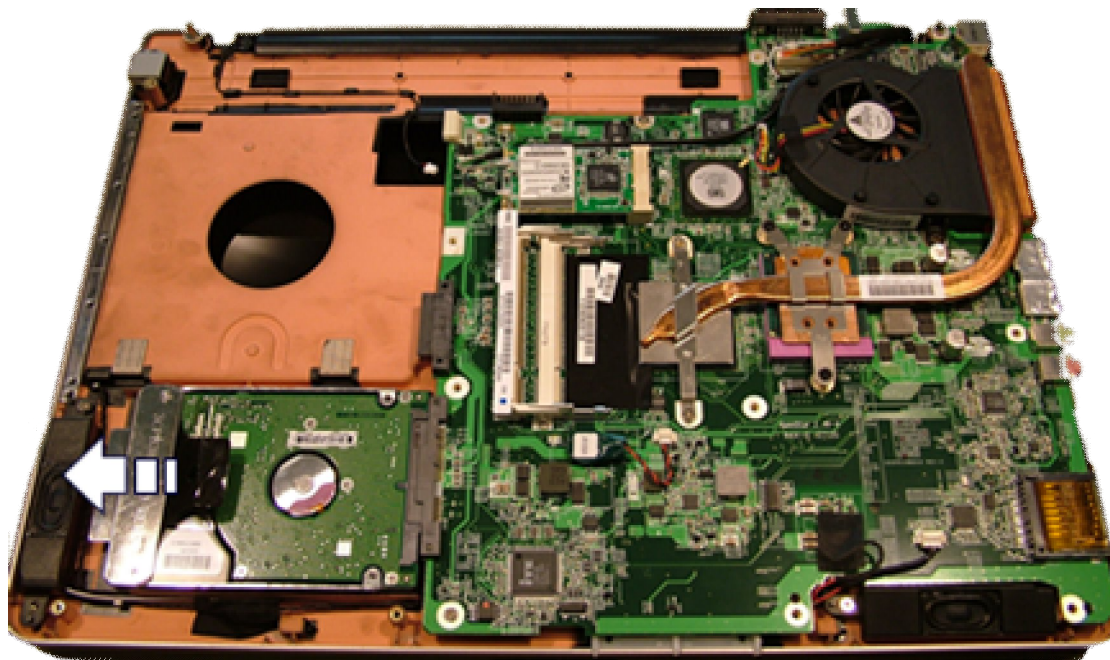


Fig. 12 The HDD.

3. Remove the 2 screws from the hard drive bracket.



Fig. 13 The HDD bracket.

Wireless LAN

1. Remove the bottom cover as described above.
2. Disconnect the wireless LAN antenna.
3. Remove the screw securing the wireless adapter.
4. Take away the wireless LAN adapter.

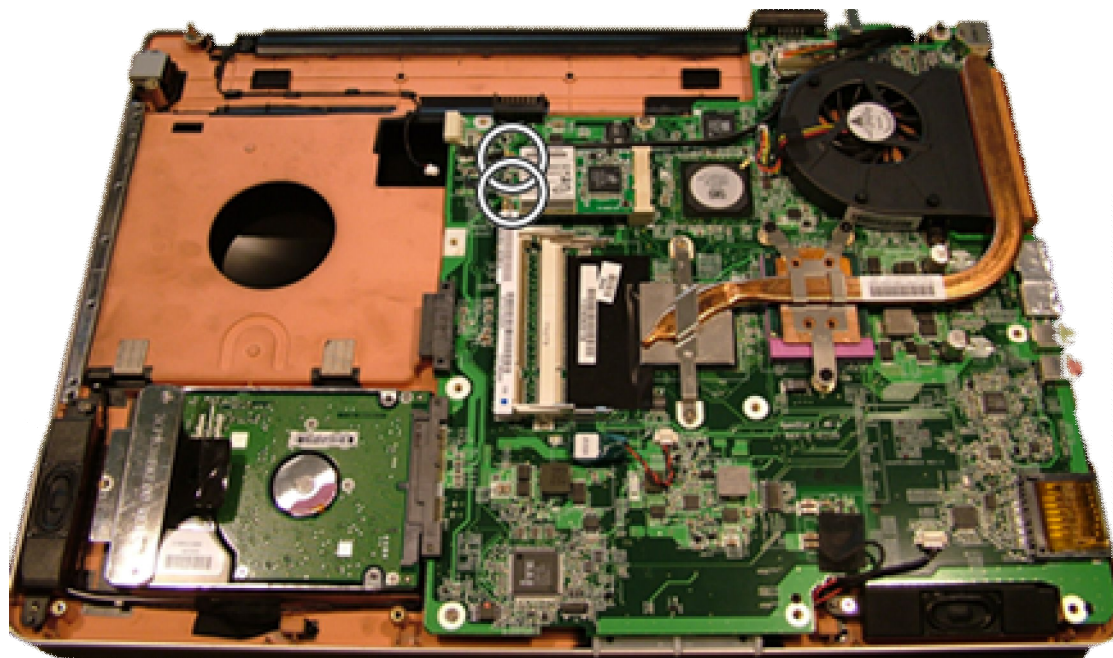


Fig. 14 The WLAN card.

CPU Fan

1. Remove the bottom cover as described above.
2. Disconnect the wireless LAN antenna as described above. Free the antenna from its clamps.
3. Disconnect the power cable of the CPU fan.
4. Remove the 2 screws of the CPU fan.

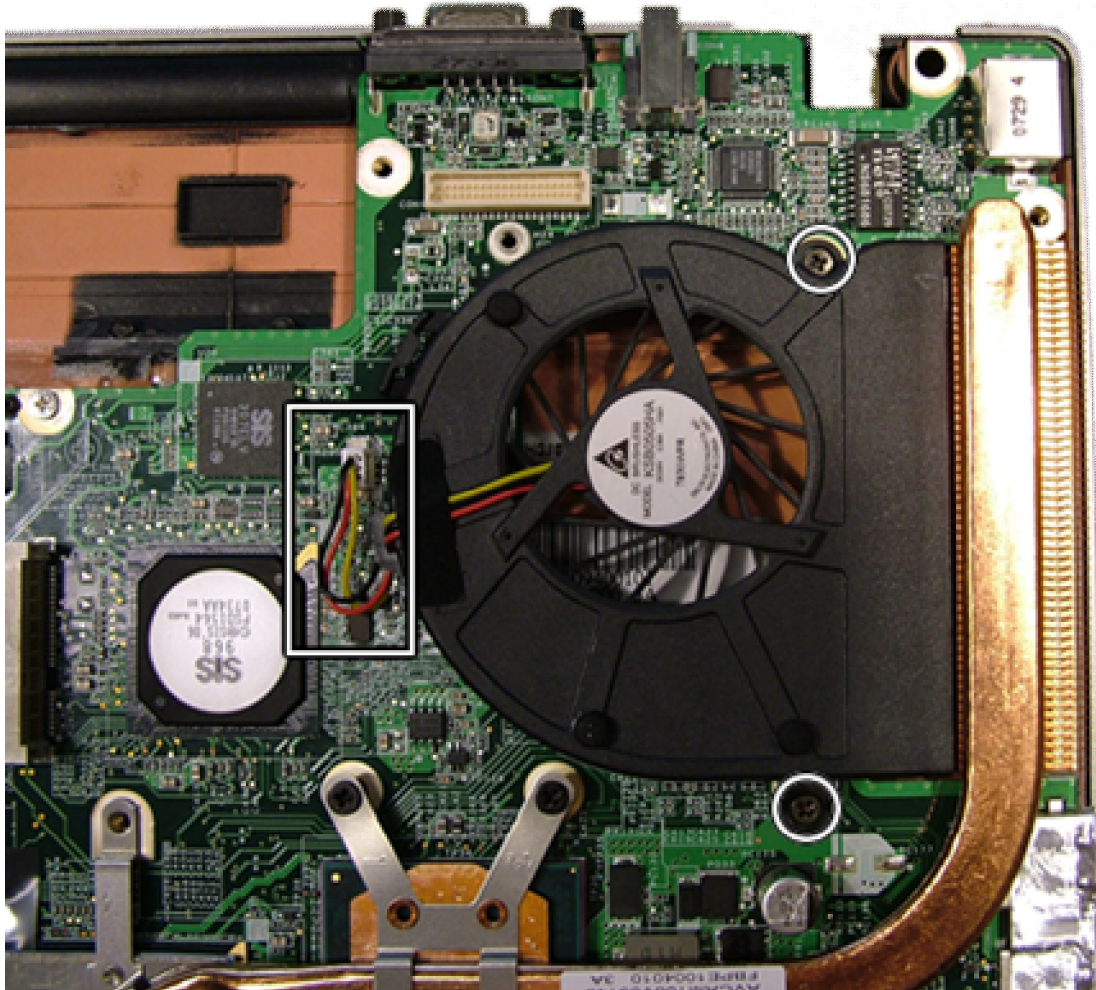


Fig. 15 *The CPU fan.*

5. Remove the CPU fan.

CPU Heatsink

1. Remove the bottom cover and CPU fan as described above.
2. Remove the 5 screws of the CPU heatsink in the order indicated on the heatsink. Screw 1, 2 and 3 remain attached to the heatsink.

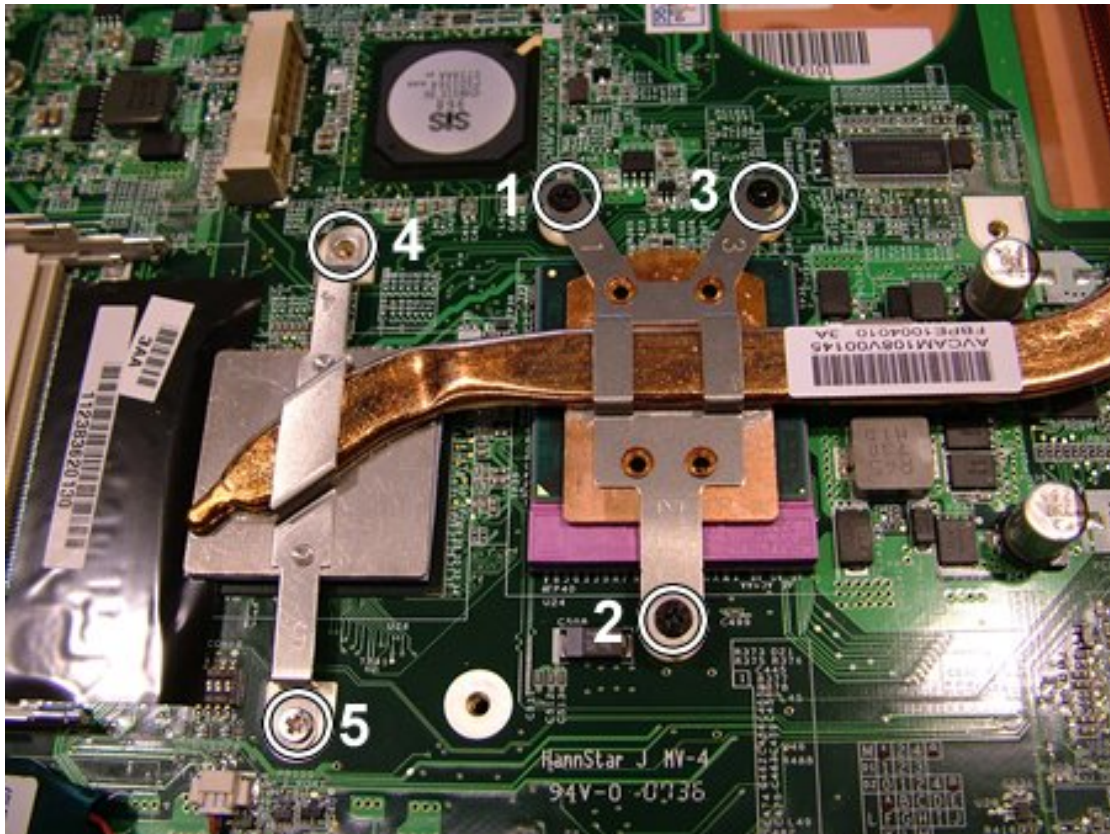


Fig. 16 The CPU cooler.

3. Take away the heatsink.

CPU

1. Remove the CPU heatsink as described above.
2. Turn the screw of the CPU socket 180 degrees.
3. Take the CPU out of its socket.



Fig. 17 The CPU cooler.

Note: The EasyNote MH35 has a socket P. This looks a lot like the older sockets for Intel Mobile CPUs, however, it is not pin-compatible.

RTC Battery

1. Remove the bottom cover as described above.
2. Disconnect the RTC battery from the mainboard.

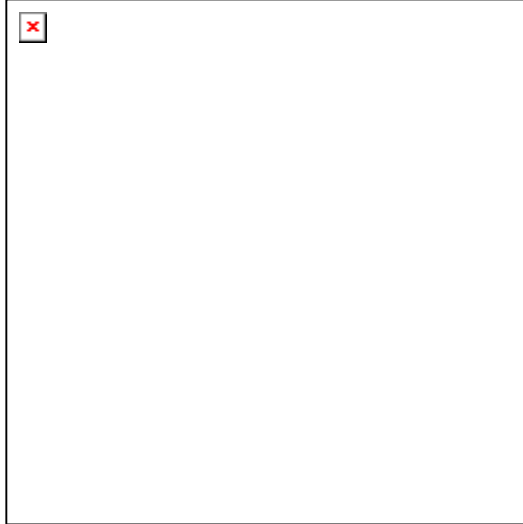


Fig. 18 *The RTC battery.*

3. Remove the RTC battery, which is glued in its place.

Mainboard

1. Remove the bottom cover, keyboard, memory, CPU, wireless LAN hard drive and RTC battery as described above.
2. Disconnect the speaker cables and the (optional) modem cable.

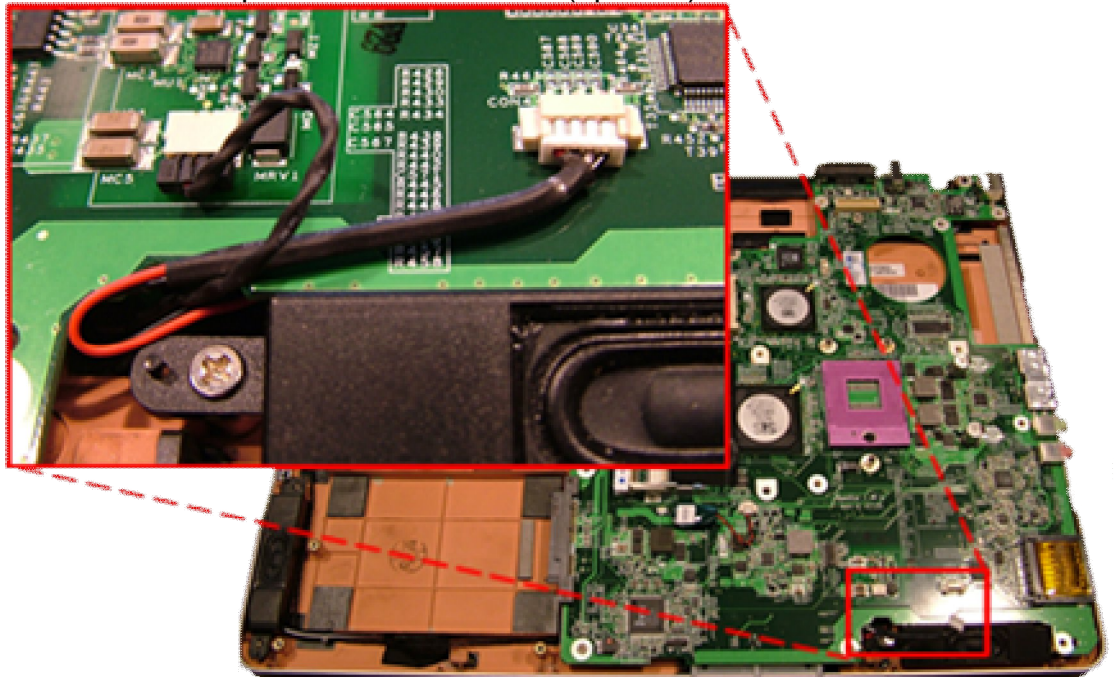


Fig. 19 *The speaker and modem cable.*

3. Disconnect the standby switch.



Fig. 20 *The standby switch.*

4. Disconnect the touchpad flatcable, by gently lifting the black clip.

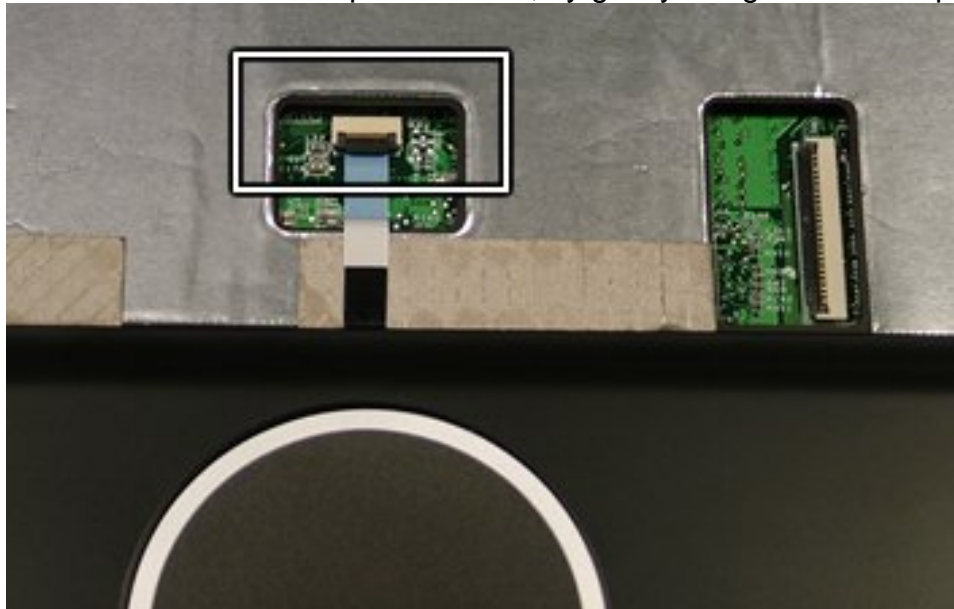


Fig. 21 *The touchpad flatcable.*

5. Disconnect the LCD cable and the LCD grounding cable. The LCD grounding cable is the one held by the screw.

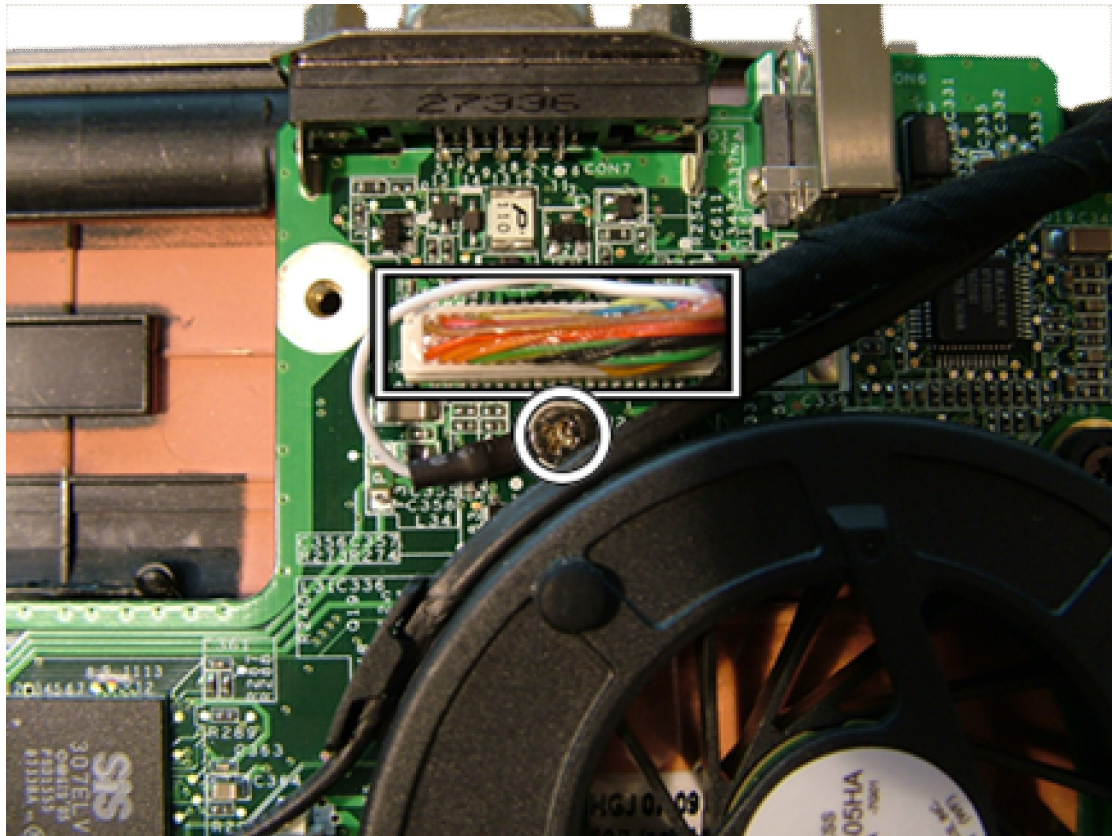


Fig. 22 The LCD cable and grounding cable.

6. Remove the 2 hex bolts adjacent to the VGA connector.
7. Remove the 2 screws from the mainboard.

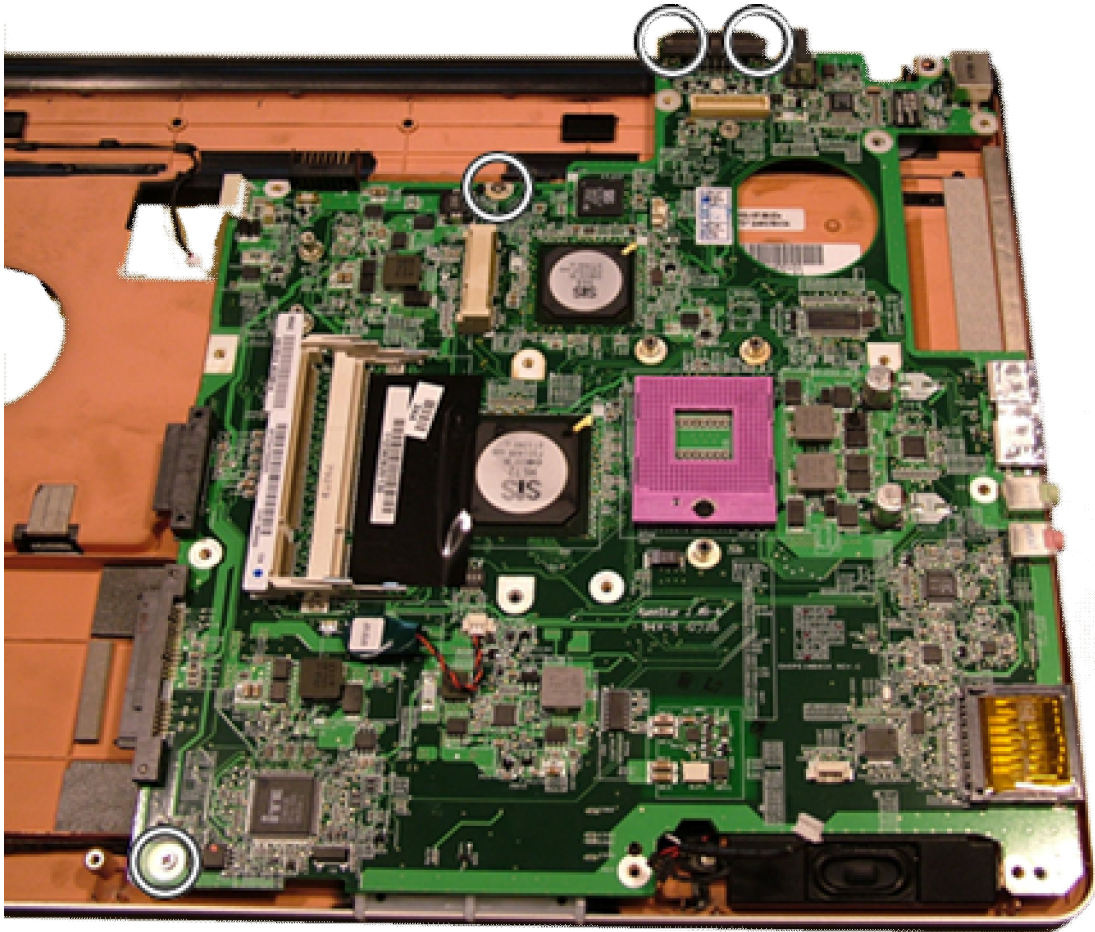


Fig. 23 *The mainboard assembly.*

Modem and RJ-11 Port (optional)

1. The modem is part of the mainboard and cannot be exchanged separately.
2. To exchange the cable and RJ-11 port, remove the mainboard as described above. You can leave the CPU (and its fan and cooler) and the Wireless LAN on the mainboard.
3. The cable and part can now be taken from the top cover.

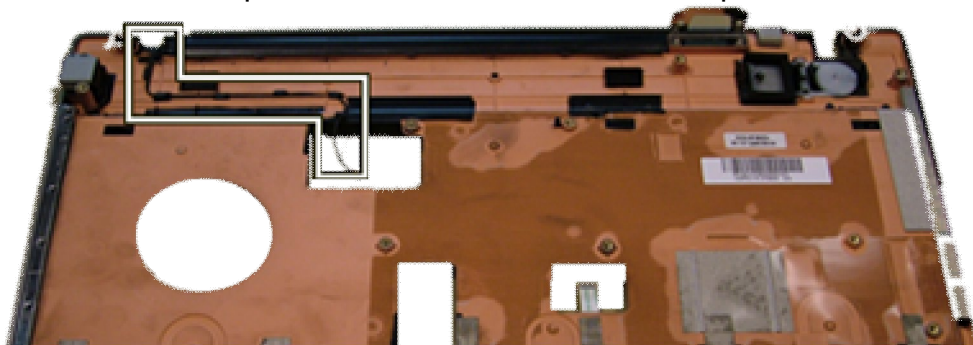


Fig. 24 *modem cable.*

Speakers

1. Remove the mainboard as described above. You can leave the CPU (and its fan and cooler) and the Wireless LAN on the mainboard.

2. Remove the screws securing the speakers.
3. Release the cable from its clamps.

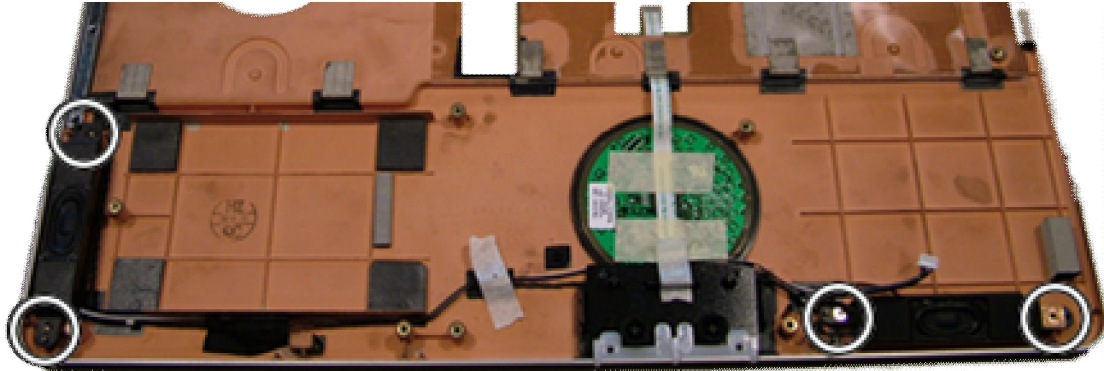


Fig. 25 *The speaker cables.*

Note: The speakers share one cable. They cannot be exchanged separately.

Touchpad

1. The touchpad is part of the top cover and does not require further disassembly.
2. The flat cable connecting the touchpad to the mainboard is a separate service part.

Stand-by Switch

1. Remove the bottom cover as described above.
2. Disconnect the stand-by switch from the mainboard.
3. Take the switch away from the top cover.



Fig. 26 *The stand-by switch.*

LCD Assembly

1. Follow the instructions to remove the bottom cover as described above. Just before removing the bottom cover, take away the 2 hinge covers.

2. Disconnect the LCD cable and the LCD grounding cable. The LCD grounding cable is the one held by the screw.

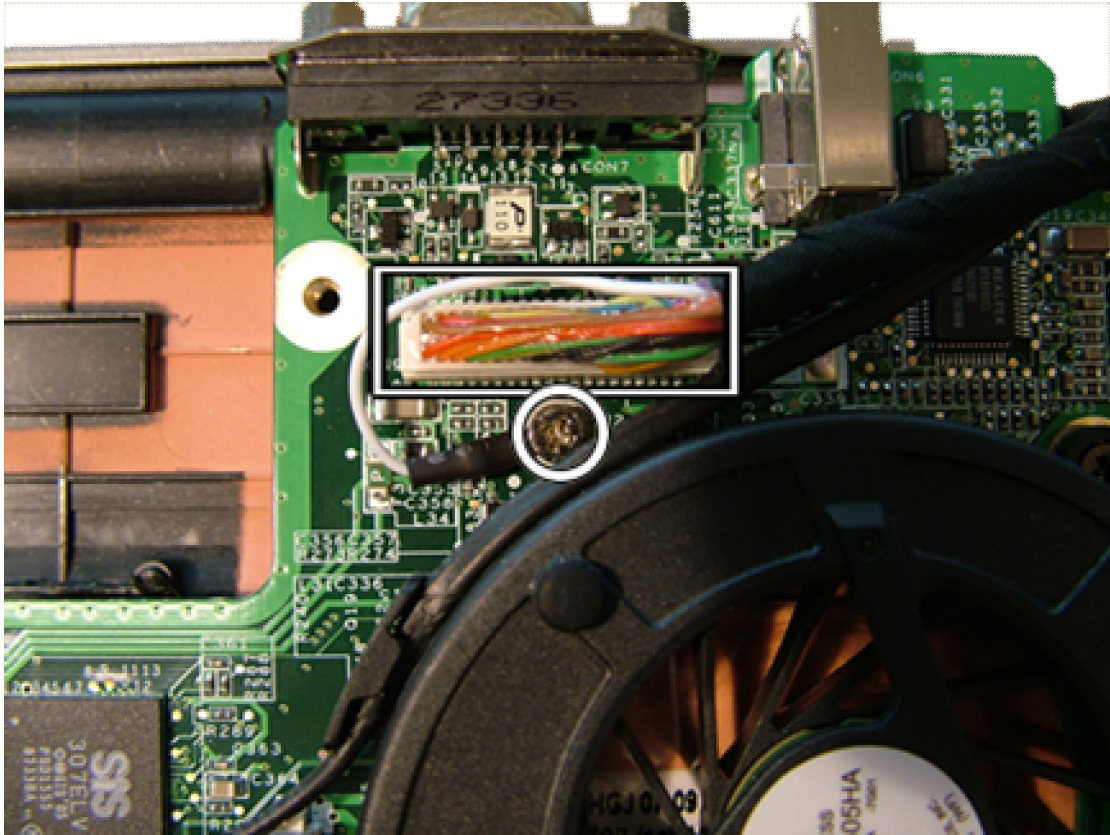


Fig. 27 The LCD cable and grounding cable.

3. Disconnect the wireless LAN antenna from the card.



Fig. 28 The Wireless LAN module.

4. Take away the screen from the top cover.

LCD Panel

1. Remove the LCD assembly as described above.
2. Remove the 6 rubber stoppers from the LCD bezel.



Fig. 29 The LCD panel.

3. Remove the 6 screws that were hidden by the rubber stoppers.
4. Remove the LCD bezel. It is clicked in its place.
5. Disconnect the cable from the web cam.



Fig. 30 *The web cam cable.*

6. Disconnect the inverterboard cables.



Fig. 31 *The inverter board cables.*

7. Take away the LCD panel.
8. Remove the LCD hinges, held place by 2 screws each.

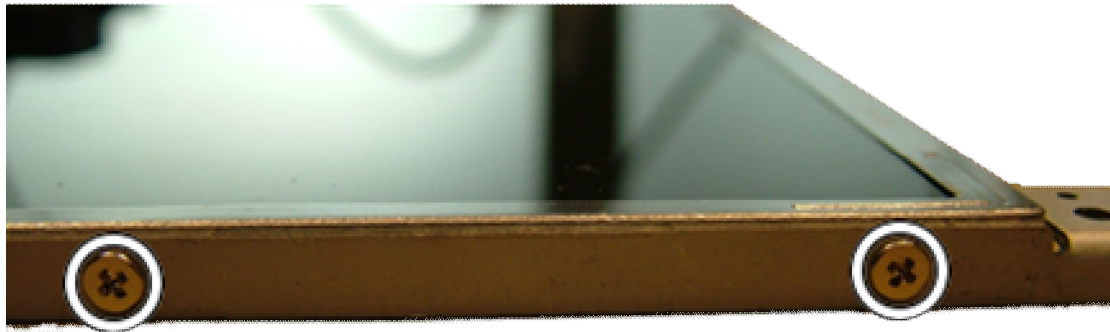


Fig. 32 *The LCD hinge screws.*

9. Disconnect the LCD cable. Peel away the tape and pull the cable from the connector.

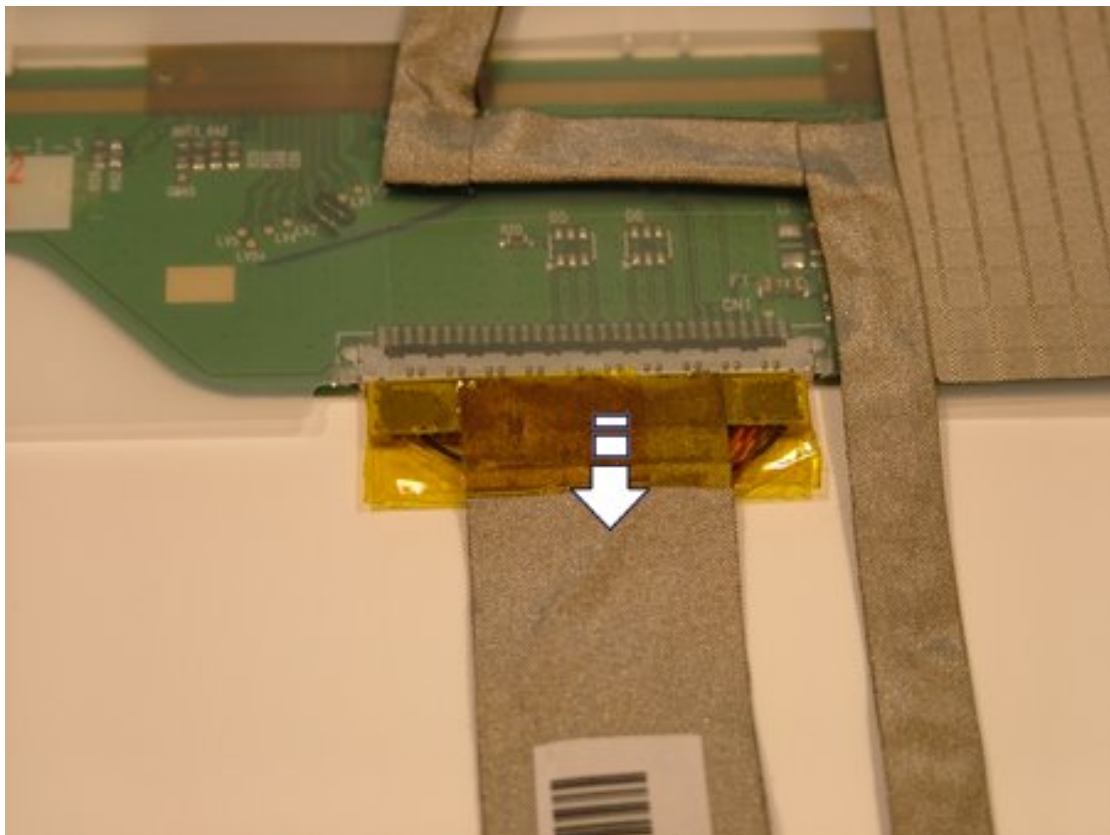


Fig. 33 *The LCD cable.*

Webcam

1. Follow the instructions on removing the LCD Panel up to and including step 5.
2. Remove the 2 screws.



Fig. 34 *webcam.*

3. Remove the webcam.

Inverter Board

1. Follow the instructions on removing the LCD Panel up to and including step 6, skipping step 5 (the webcam).
2. Remove the inverter board. Note that it is glued in its place.

Wireless LAN Antenna

1. Remove the PCD panel as described above.
2. Remove the 2 screws of the antenna.

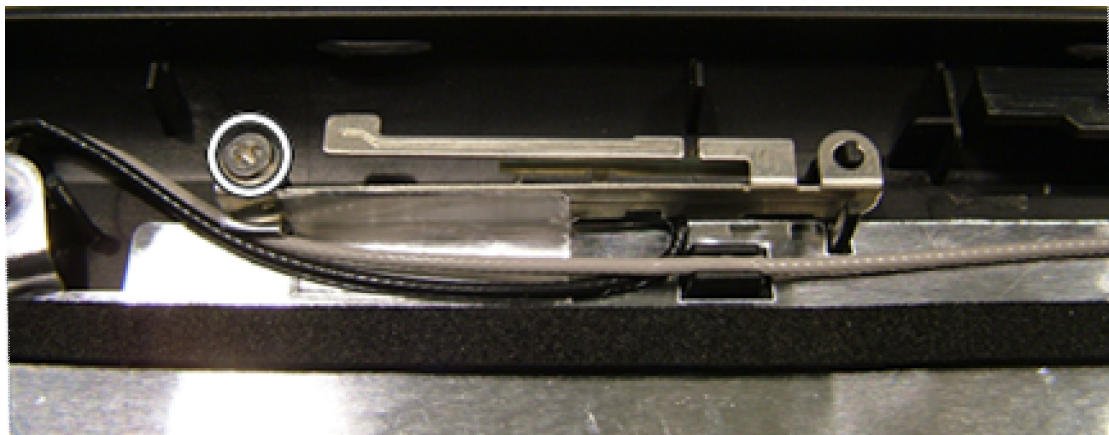


Fig. 35 *The wireless antenna screws.*

3. Peel away the tape that holds the metal clip.
4. Release the cable from the metal foil.



Fig. 36 *The wireless antenna.*

Reassembly Notes

When reassembling the device, please take notice of the order in which the parts can be put back and reattached.

Notice

The information in this guide is subject to change without notice.

This guide contains information protected by copyright. No part of this guide may be photocopied or reproduced in any form or by any means without prior written consent from NEC Computers International BV

NEC COMPUTERS INTERNATIONAL BV SHALL NOT BE LIABLE FOR TECHNICAL OR EDITORIAL ERRORS OR OMISSIONS CONTAINED HEREIN; NOR FOR INCIDENTAL OR CONSEQUENTIAL DAMAGES RESULTING FROM THE FURNISHING, PERFORMANCE, OR USE OF THIS MATERIAL.

Copyright © 2007 NEC Computers International BV All rights reserved.

First Edition: December 2007

Version: 1.0

Packard Bell B.V.